

AQMD

Permits

For Stationary Air Pollution Sources...
Who Needs Them and Why?

777 12th Street, 3rd Floor
Sacramento, CA 95814-1908
(916) 874-4800
(800) 880-9025
Web site: AirQuality.org



Protecting Air Quality

The Sacramento Metropolitan Air Quality Management District (AQMD) is the local government agency responsible for regulating stationary, non-vehicular sources of air pollution in Sacramento County. The AQMD works to ensure that Sacramento County's air quality meets state and federal health standards.

Its jurisdiction includes all unincorporated areas of Sacramento County, as well as the cities of Citrus Heights, Elk Grove, Folsom, Galt, Isleton, Rancho Cordova and Sacramento.

Permits: Doing Business in Sacramento County

Sacramento County's air does not meet health-based standards for ground-level ozone, particulate matter 10 (PM 10) or particulate matter 2.5 (PM 2.5). These pollutants are often a by-product of materials and/or processes used by businesses. Stationary source permits issued by the AQMD are designed to reduce air pollution and help Sacramento County meet air quality standards.

The Authority to Construct and Permit to Operate are separate documents granting permission to build and then to operate equipment that will meet air quality standards. Like city and county building permits, the Authority to Construct and Permit to Operate are part of doing business in Sacramento County.

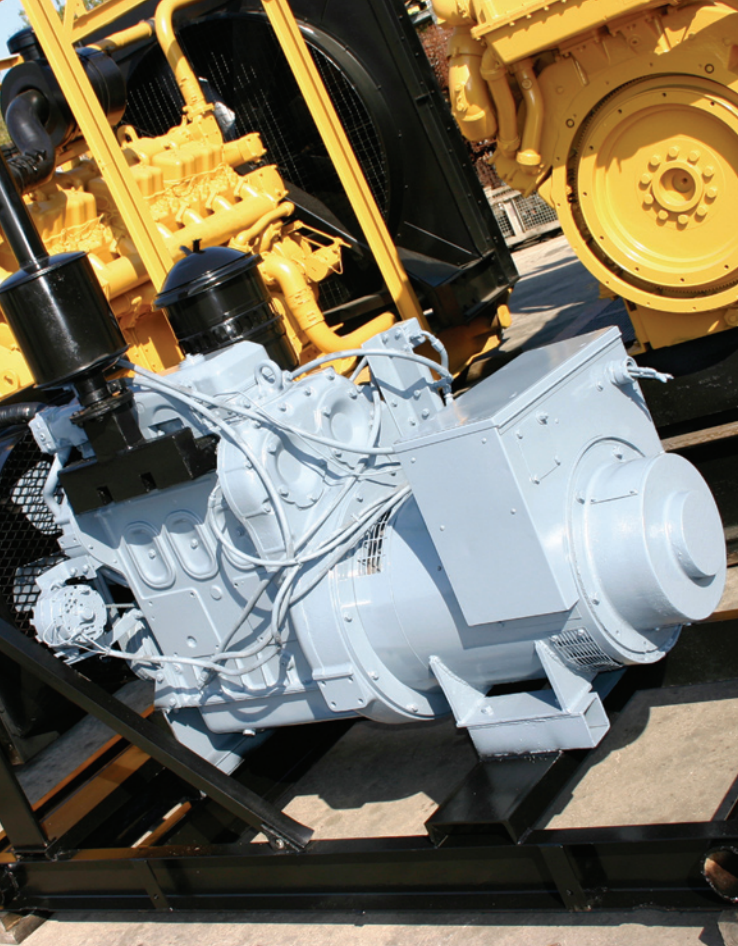
Permit Requirements for Business Operations or Equipment

AQMD rules and regulations cover large and small businesses whose operations emit air pollutants. Operations or equipment that usually require a permit include, but are not limited to:

- Solvent cleaning (degreasers)
- Coating of metal parts and products
- Coating of plastic parts and products
- Manufacturing and/or coating of wood furniture and cabinets
- Polyester resin operations
- Chemical manufacturing operations



The Authority to Construct and Permit to Operate are separate documents granting permission to build and then to operate equipment that will meet air quality standards.



AQMD mission statement

Achieve clean air goals by leading the region in protecting public health and the environment through innovative and effective programs, dedicated staff, community involvement and public education.



- Dry materials handling (concrete & aggregate plants) that generates PM 10
- Auto body refinishing
- Graphic arts operations (print shops)
- Gasoline stations or any gas dispensing facility
- Storage of organic liquids
- Combustion equipment such as boilers and internal combustion engines
- Dry cleaning
- Equipment which handles asbestos, beryllium, benzene, hexavalent chromium, mercury or vinyl chloride
- Solid waste disposal sites
- Contaminated soil/water remediation projects
- Plating operations
- Air pollution control equipment such as scrubbers, cyclones, fabric filters and thermal oxidizers
- Any painting or coating operation using five gallons or more per week of combined volume of paints, adhesives, inks, solvents or other solvent containing material
- Any process that emits more than 2 pounds per day of *any* pollutant

Stationary Source Permits

Stationary source permits are required by law and are needed:

- Before installing new equipment or processes that may release or control air pollutants
- Before modifying existing permitted equipment that may release or control air pollutants
- When a permitted facility changes ownership
- When permitted equipment is relocated to a new address
- When a change in the methods and/or process rate of operation occurs at a permitted facility
- When a permitted facility wishes to modify a permit condition, including changing its permitted emissions
- When new regulations are promulgated

As a practical matter, you should contact the AQMD before purchasing new equipment.

Permit Application

Call the AQMD at (916) 874-4800 and ask for a stationary source permit application package, which includes an application form and instructions or you can get the application forms on-line by visiting our Web site at www.AirQuality.org.

To apply, provide the AQMD with:

- A completed permit application form
- Detailed description of your equipment
- Detailed information on materials processed
- Detailed information on quantity of air emissions
- The appropriate permit fee

Submit all of the above, either in person or by mail, to AQMD, 777 12th Street, 3rd floor, Sacramento, CA 95814-1908.

An AQMD permit engineer assigned to handle your application will contact you regarding any additional information needed. Processing time varies from six weeks to six months, depending on the complexity of the application and volume of permits in process.

Authority to Construct

You must file and obtain the Authority to Construct before construction begins to ensure that all AQMD rules and regulations are considered. This allows time for you to make any required design changes in the planning stage. Failure to apply before construction may result in possible civil or criminal penalties, as well as investment in design or purchase of equipment that may not be found acceptable.

An AQMD permit engineer evaluates your project before an Authority to Construct is issued. The evaluation is based on your application, proposed air pollutant emissions, plans you provide for all equipment, and background information on the proposed operation. It is up to you to demonstrate that your equipment can operate in compliance with all AQMD rules and regulations.

Operating Equipment without a Permit

If you operate equipment that emits or controls air pollutants without a Permit to Operate, you are subject to legal action. You must submit an application, and all information required for permit evaluation to obtain a Permit to Operate.

Your Permit to Operate must be renewed annually. As part of the annual renewal process, compliance with permit conditions and emission limitations can be reviewed as needed.

Permit Fees

Every applicant for an Authority to Construct shall pay one half the estimated initial permit fee upon filing of the application, and the remainder before issuance of the Permit to Operate.

A permit fee will be assessed for each new or modified source based on the type and size of the source.

A fee is required for the annual renewal of a Permit to Operate. The permit renewal fee is based on the type and size of the equipment and the calculated fee for the total tons of each pollutant emitted during the previous calendar year.

If your equipment emits a substance known to be a toxic air contaminant you could be subject to an air toxics fee. Specific fee information is listed in AQMD Rules 301 and 306.

A Permit to Operate will be voided if the annual renewal fee is not paid within 60 days of the date the bill is sent. Operating without a permit may result in a fine of up to \$1,000 per day and/or up to six months in jail for each day of operation.

For More Information

Sacramento Metropolitan Air Quality Management District (916) 874-4800

AQMD Compliance Assistance Hotline (916) 874-4884

Business Environmental Resource Center (916) 649-0225

This brochure represents an introduction to the stationary source permit system. Rule changes can affect your business. Contact the AQMD to receive updated rules and regulations and the AQMD rule-making calendar.