



Community Air Protection Program and Clean Air Investments

October 21 & 23, 2019

South Natomas/North Sacramento Community Meeting

Mark Loutzenhiser

Program Coordination
Division

Jaime R. Lemus

Transportation and
Climate Change

Purpose: Identify local air pollution impacts & invest state dollars to reduce local emissions to improve air quality in our communities

AB 617
Community Air
Protection

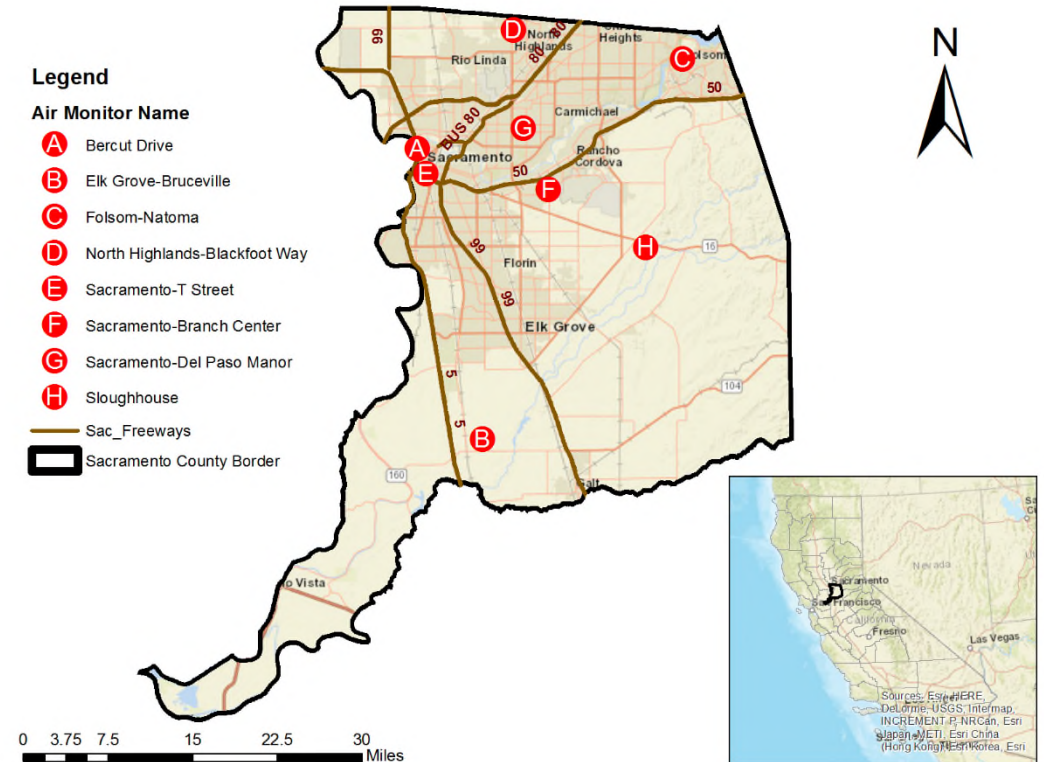


Community Air
Protection
Investments



Motivation for AB 617

- Historical focus on regional air quality, significant improvements
- Need for community-level focus
- Advances in technology
- Bring funding into communities to effectively reduce localized emissions



Key Community Elements

A rounded square icon with a blue sky and white clouds background. The text "Community- Level Air Monitoring" is centered in bold black font.

Community- Level Air Monitoring

Identify local emissions and monitor for progress



Invest in clean air technology to improve air quality

Community-Level Air Monitoring



Examples of different options for community level air monitoring due to advances in technology



Residence Backyards

How To Get These Programs Into Your Community

- **The California Air Resources Board, State Agency (CARB) selects communities and investments, local air districts implements**

Provide Community Feedback

ONGOING

Sac. Metro Air District Recommend year 2 Communities

Fall 2019

How Did We Determine Areas With Highest Cumulative Air Pollution Impacts?



Exposure to Air Pollution

- Concentrations of criteria and toxic air pollutants
- Density and magnitude of industrial emission sources



Sensitive Receptors

- Proximity to mobile and stationary sources of concern (parks, schools, hospitals)



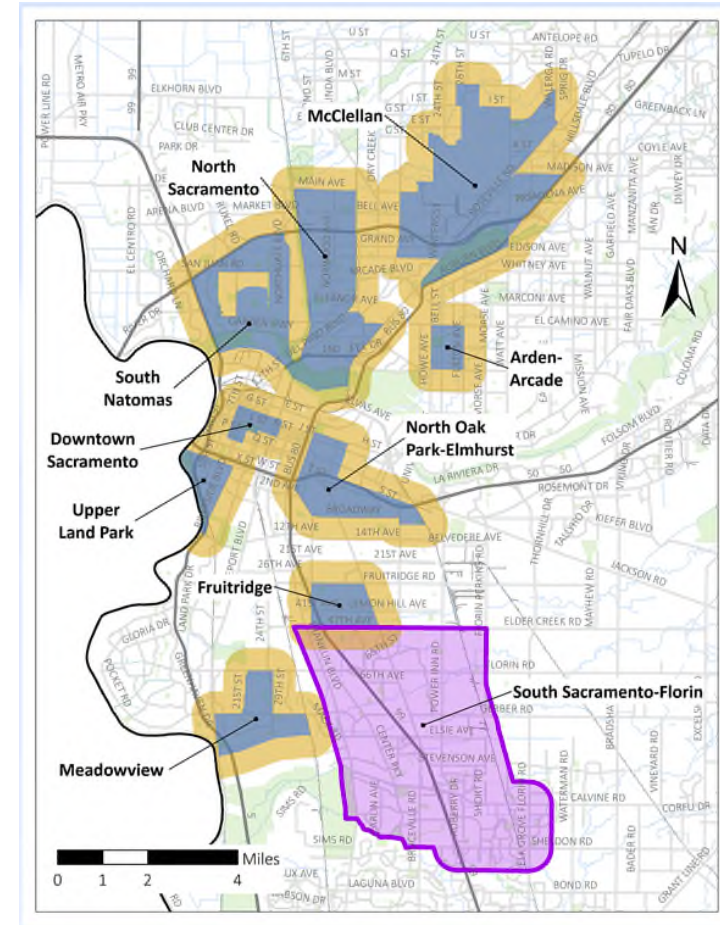
Sensitive Population

- Socio-Economic (Low Income Communities)
- Public Health Indicators (Sacramento County Health Needs Assessment)



Question for the Community:

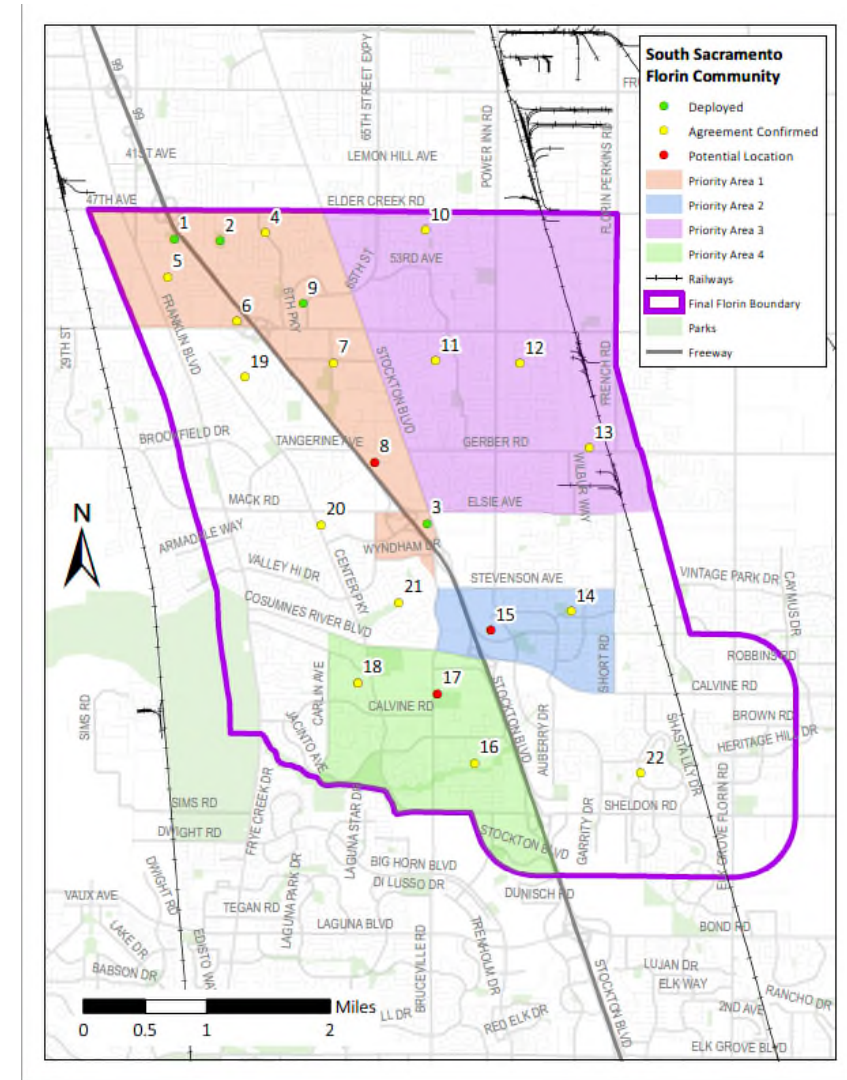
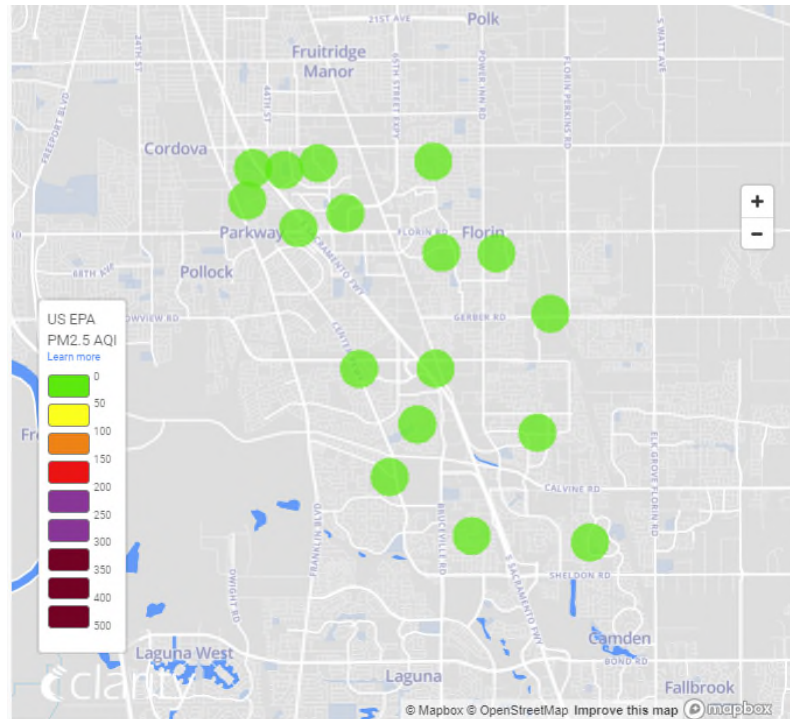
- Any other factors to consider?
- Should all of these factors be weighted equally?



Community Monitoring

All data placed on our website

Currently in Phase I of deployment

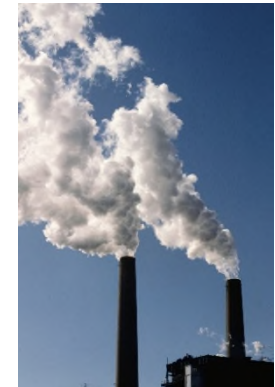
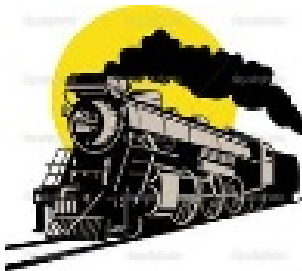


<http://www.airquality.org/Air-Quality-Health/Community-Air-Protection/Community-Air-Monitoring>

Question for the Community

What Air Pollution Sources Are You Most Concerned About ?

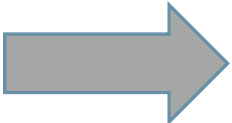
Regionally, transportation (cars, trucks, buses, equipment, locomotives, etc.) is the source of most pollution



Clean Air Investments



District Incentive Programs (FY19/20)



Funding Source	FY 19/20	Project Type
Moyer	\$4M	Off-Road & On-Road Heavy Duty Vehicles, Electric Charging Stations, Locomotives, School Buses
DMV \$2	\$2M	
Community Air Protection Program Year 2	\$14M	
SECAT Green Region	\$3.3M	On-Road Heavy Duty
FARMER	\$1M	Off-Road, On-Road
Carshare	\$2M	Light Duty Mobility Options
Clean Cars 4 All	\$6M	Light Duty Replacement & Mobility Options
Grand Total	\$32.3M	

Sample Projects	
Zero Emission School Buses	Zero Emission Infrastructure
Zero Emission Transit Buses	Low Emission Tier 4 Ag-Tractors, Construction, & Locomotives
Zero Emission Microtransit Shuttles	Zero Emission and Hybrid Car Replacements
Zero Emission Medium & Heavy Duty Trucks	Zero Emission and Hybrid Vehicles for Carshare & Ridehail Options

Information & Next Steps

- **Keep informed** – Visit our Community Air Protection webpage
 - <http://www.airquality.org/Air-Quality-Health/Community-Air-Protection>
 - Sign-up for email updates
- **State** will select Year 2 communities December 2019
- **Next South Sacramento-Florin Steering Committee meeting**
October 22, 2019, from 6-8 PM
Bowling Green Elementary School (cafeteria)
4211 Turnbridge Dr., Sacramento

Contact Information

Janice Lam Snyder, Program Manager
(916) 874-4835
jlam@airquality.org

David Yang, Program Supervisor
(916) 874-4847
dyang@airquality.org

Jaime R. Lemus, Division Manager
(916) 874-2911
jlemus@airquality.org

Mark Loutzenhiser, Division Manager
(916) 874-4872
mloutzenhiser@airquality.org